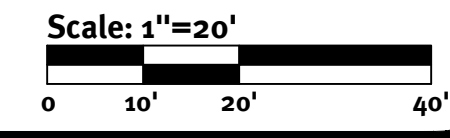
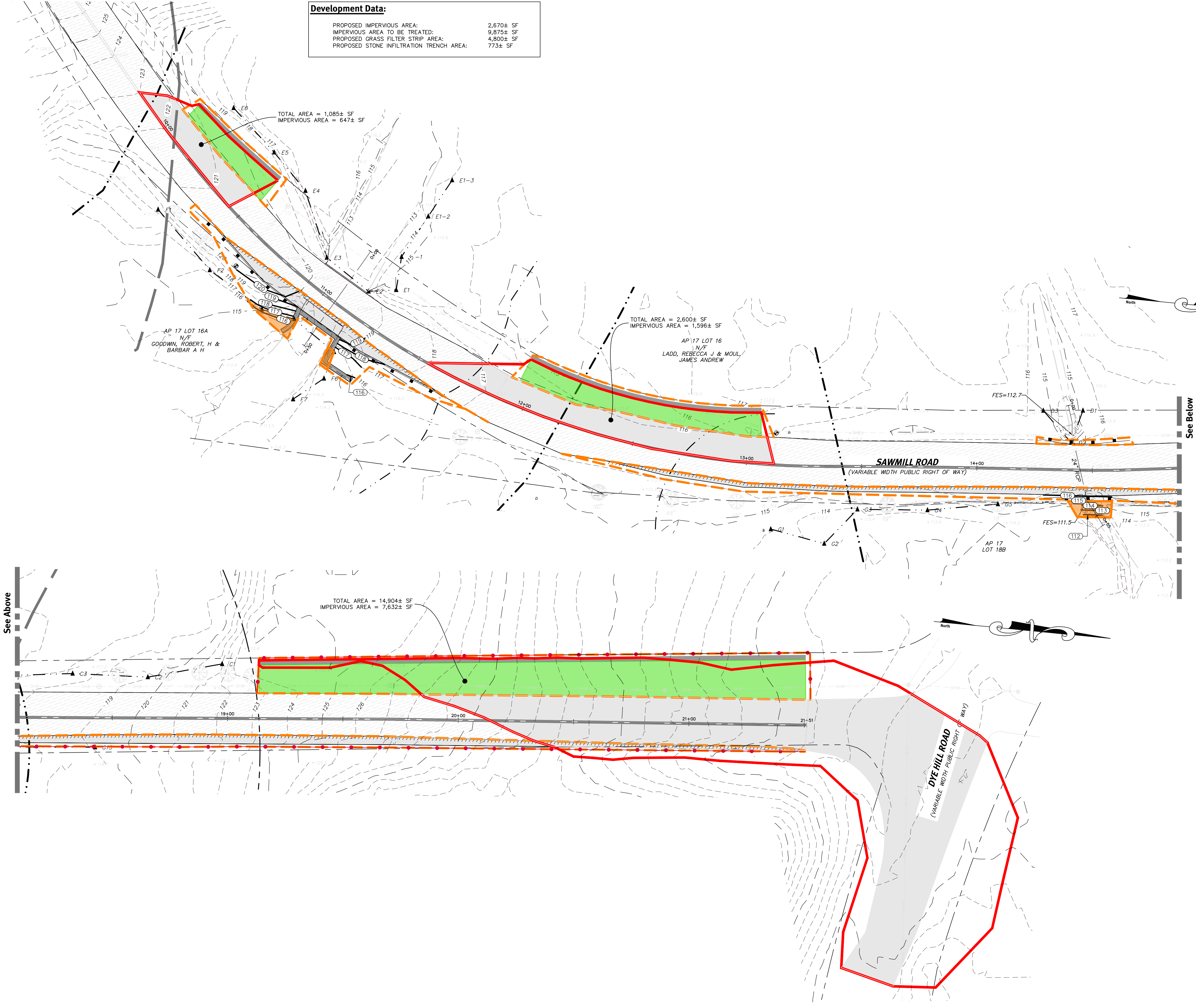


E:\Main\projects\1193-001_bushy_brook\anncad\drawings\1193-001_plan_sawmill.dwg Plotted: 4/4/2022



WAMP Exhibit
Sawmill Road
 Hopkinton, Rhode Island

Client
LR6-A Owner, LLC C/O Realty Financial Partners
 200 Summit Drive, Suite 210, Burlington, MA 01803
 Tel: 781-371-2001
 DE Job No: 1193-001 Copyright: 2019 by DiPrete Engineering Associates, Inc.

This regulatory submission set shall not be used for construction unless examined, issued for construction, and signed by a DiPrete Engineering representative.

The contractor is responsible for all of the means, methods, safety precautions and requirements, and OSHA compliance in the implementation of this plan and design.

DiPrete Engineering
 Two Stafford Court Cranston, RI 02920
 tel 401-943-1000 fax 401-664-6006 www.DiPrete-Eng.com

Engineers • Planners • Surveyors